

# Product data sheet

Specifications



Meter mains, QO, CSED, ringed socket, 125A, surface mount, no bypass

C125RB

Product availability: Stock - Normally stocked in distribution facility

## Main

Product or Component Type	Meter Mains
Range of Product	QO

## Complementary

Line Rated Current	125 A
Short-circuit current	10 kA
Network number of phases	1
Meter socket type	Ringed
Mounting	Surface
Number of spaces	0
Number of circuits	0
Number of Tandem Breakers	0
Hub type	B
Electrical connection	Lugs, line side Lugs, service ground
Wire Size	AWG 4...AWG 1/0 aluminium/copper)line side AWG 8...AWG 1/0 aluminium/copper)service ground
Disconnect	Service disconnect (ordered separately)
Main Breaker Rating	125 A
Service feed location	OH UG
Bypass type	No bypass
Height	12.80 in (325.12 mm)
Width	13.82 in (351.03 mm)
Depth	4.39 in (111.51 mm)

## Environment

Product certifications	UL E-6294
------------------------	-----------

## Ordering and shipping details

Category	US1DE3A00022
Discount Schedule	DE3A
GTIN	785901030058
Returnability	Yes

Price is "List Price" and may be subject to a trade discount – check with your local distributor or retailer for actual price.

Disclaimer: This documentation is not intended as a substitute for and is not to be used for determining suitability or reliability of these products for specific user applications

Country of origin	MX
-------------------	----

## Packing Units

Unit Type of Package 1	PCE
Nbr. of units in pkg.	1
Package 1 Height	5.600 in (14.224 cm)
Package 1 Width	14.00 in (35.56 cm)
Package 1 Length	14.50 in (36.83 cm)
Package weight(Lbs)	14.621 lb(US) (6.632 kg)

## Contractual warranty

Warranty (in months)	18
----------------------	----



## Environmental Data

Schneider Electric aims to achieve Net Zero status by 2050 through supply chain partnerships, lower impact materials, and circularity via our ongoing “Use Better, Use Longer, Use Again” campaign to extend product lifetimes and recyclability.

[Environmental Data explained >](#)

[How we assess product sustainability >](#)



### Environmental footprint

Carbon footprint (kg CO2 eq, Total Life cycle)	276
Environmental Disclosure	<a href="#">Product Environmental Profile</a>

## Use Better



### Materials and Substances

Packaging made with recycled cardboard	No
Packaging without single use plastic	Yes
<a href="#">EU RoHS Directive</a>	Compliant with Exemptions
REACH Regulation	<a href="#">REACH Declaration</a>
California proposition 65	WARNING: This product can expose you to chemicals including: Lead and lead compounds, which is known to the State of California to cause cancer and birth defects or other reproductive harm. For more information go to <a href="http://www.P65Warnings.ca.gov">www.P65Warnings.ca.gov</a>

## Use Longer



### Lifetime extension

Repair	No
--------	----

## Use Again

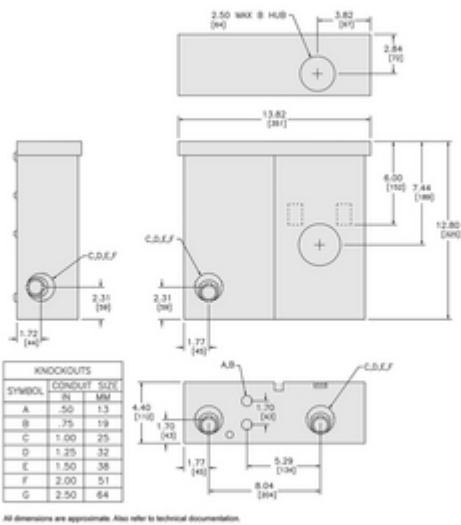


### Repack and remanufacture

Circularity Profile	No need of specific recycling operations
Take-back	No

Technical Illustration

Dimensions



Technical Illustration

Wiring diagram

---

